



## **ACCUSCAN—The Precise Scanner HMD for Crop Optimization**



### **Features:**

- **Exceptional High Accuracy and scan for cropping at the shear**
- **Fast Programmable Response**
- **Mounts 2-5 mts Above the Line**
- **Aligns via Laser Line Emitter**
- **Completely Encasing Water Jacket**

### **Description**

Whereas traditional Hot Metal Detectors are commonly not suitable for cut-to-length or crop optimization because they are too imprecise, the Accuscan Scanning HMD is engineered to provide the user with exceptional high accuracy and fast response time for crop optimization. The Accuscan outperforms all other HMDs from other Companies. It mounts directly above the line from as far away as 5 mtrs above the hot slab, plate or strip. With no moving parts and built in laser Line Emitter for aligning the HMD and a wide range of lens options the Accuscan also offers the user high flexibility.

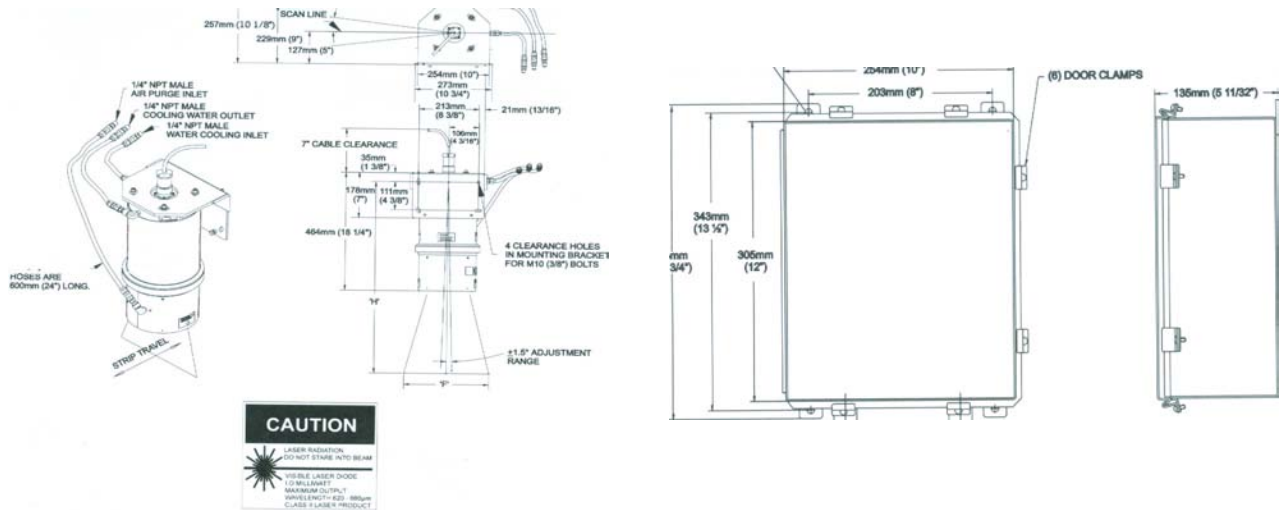
With a totally encasing water jacket and powerful air purge the Accuscan HMD is the ideal solution for providing exceptionally highly accurate input for cut-to-length and crop optimization in the Strip or Bar Mill. Measurement accuracy of  $\pm 3\text{mm}$  to  $\pm 2$  alpha with 0.5—8ms response time can be expected.

Supplied complete with Air Nozzle, Mounting Bracket, plus 15 m Interconnection cable for termination in provided Junction Box with RS232 Port and Function LEDs.

### **Configuration Options**

Programmable configuration options allow for control scan rate, detection threshold, detectable material width and de-bounce set time. Additional parameters are provided for acquisition and run phase to minimize false detection and drop out with black spots and water.

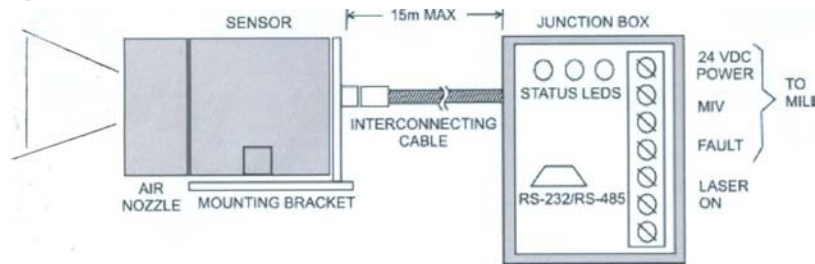
## Dimensions



## Specifications

Measurement accuracy	- +/- 3 mm . =-2 alpha with 2 m scan	Power Supply	24 VDC +/- 20% <200mA via 15 m Interconnection cable rated to 200 deg C
Scan rate	Programmable from 125—2000 scans/sec, depending on product temp	Detector Outputs (2)	Material in view and fault. Form A 30 VDC/50mA relays
Head end response	Adjustable within 0.5—8 ms depending on scan rate and de-bounce time	Air supply	64 l/min @140 kPa at 20 deg C
Alignment Laser	Visible line CDRH Class II, 3.5 mW 640 nm	Water Supply	20 l/min , maximum 40 deg C
Mounting Distance	Above the line from 1 m to 5 m stand off depending on lens and selected scan width	RS232.485 Connection	Via 9 way D Port on the Junction box.
Required product temperature	700 deg C to 1300 deg C	Junction Box Status Lights	Power, Function and Fault
Maximum Scanner Head Temperature	With water cooling 70 deg C. Without cooling 50 Deg C	Maximum Cable Temperature	200 deg C

## Hardware Configuration



## MODULOC<sup>®</sup> Technology - The Total Sensor Solution

**MODULOC<sup>®</sup>**  
Control Systems

We reserve the right to alter specifications without prior notice. Specifications without tolerances are typical values.

Your Local Sales Representative:



Bulletin MC-DTF6000-08-01  
January 2008